

Compact Digital Photo Printer

# Color Stream CS2



## More Efficient, More Ecological, More Affordable Most Compact & Light dye-sub printer

### Superior Image Quality

The print quality is excellent without smear by utilizing an unique thermal control technology. High quality matte finish is also available.

### Speedy and Reliable

More Stable, Reliable and speedy prints are realized.

### More Ecological

Maximum AMP draw is 3.1A.  
Low waste, and jam free.

### Light weight and most compact

World lightest weight less than 10kg and most compact size design are achieved.

### High Mobility

Easy to carry. Can use it anywhere and anyway.

### More Affordable

Enough capacity for daily use. Save your money and workload.

#### Features

Light & Compact

Half Size  
of a conventional

Energy Saving

Matte Print

#### Paper Size (inch)

5x7

4x6  
6x8

Multi Cut  
4x6  
x2

#### Print Speed

4x6  
11  
sec



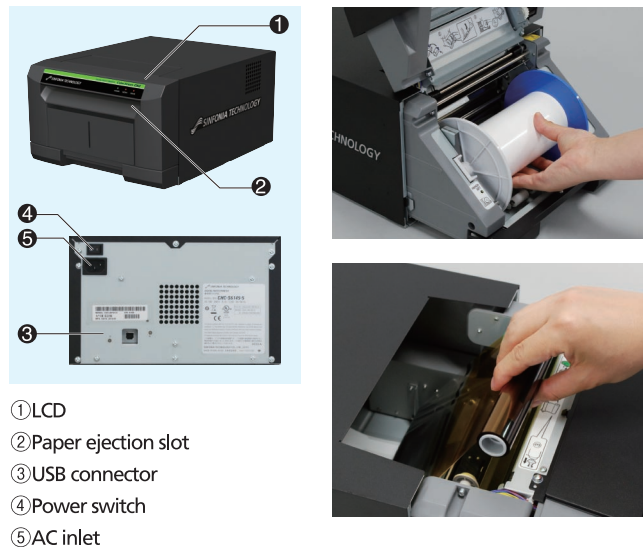
# SINFONIA PHOTO

www.sinfoniaphoto.com

Compact Digital Photo Printer

# Color Stream CS2

The compact design enables to carry it anywhere and use it anyway.



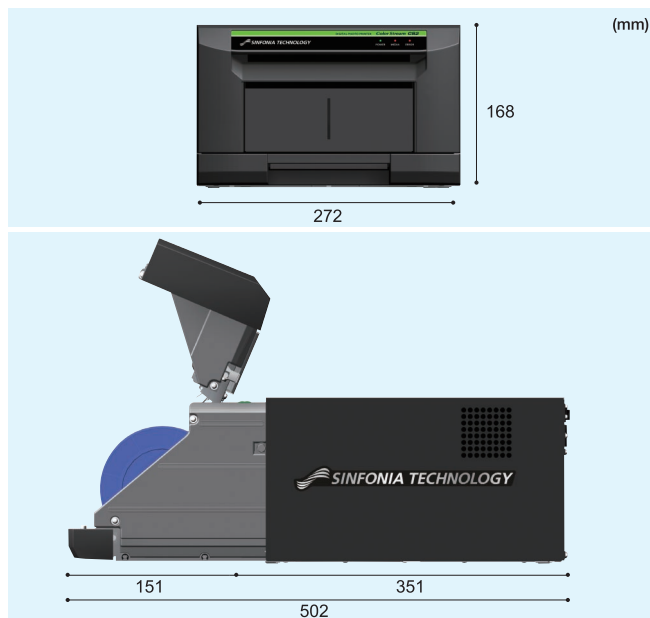
- ① LCD
- ② Paper ejection slot
- ③ USB connector
- ④ Power switch
- ⑤ AC inlet

## Specifications

<b>Model No.</b>	CHC-S6145
<b>Print Method</b>	Dye Sublimation Thermal Transfer
<b>Resolution</b>	300dpi
<b>Paper Size Capacity</b>	<b>300</b> prints: 102mm×152mm (4"×6")
	<b>170</b> prints : 127mm×178mm (5"×7")
	<b>150</b> prints : 152mm×203mm (6"×8")
<b>Multiple print</b>	(6"×4") ×2 with 6"×8"
<b>Print Speed</b>	<b>11</b> seconds: 102mm×152mm (4"×6")
	<b>17</b> seconds: 127mm×178mm (5"×7")
	<b>19</b> seconds: 152mm×203mm (6"×8")
<b>Ink Ribbon / Paper</b>	YMC+OP / Roll Paper
<b>Dimensions</b>	272(W) ×168(H) ×351(D) mm
<b>Weight</b>	10Kg or less
<b>Power Supply</b>	AC100-240V , 50 / 60Hz Auto-switching
<b>Power Consumption</b>	3.1A- 1.3A
<b>Interface</b>	USB 2.0
<b>Buffer Memory</b>	32MB
<b>Safety Standards</b>	UL , cUL , CE
<b>EMI</b>	FCC ClassA , VCCI ClassA
<b>Printer Driver</b>	Windows XP / Vista / 7 / 8 (32bit, 64bit)
<b>Software Development Kit</b>	DLL (Windows XP / Vista / 7 / 8)

The above specifications are subject to change without notice.  
Windows and Windows Vista are either registered trademarks or trademarks of Microsoft Corporation in the United States and/or other countries.

## Dimensions



**CAUTION!** Before use, read the instruction manual carefully to ensure safe operation.  
Do not position in wet, humid, dusty or smoky environments. This may result fire, breakdown or electric shock.

Formerly SHINKO ELECTRIC CO., LTD.

# SINFONIA PHOTO

www.sinfoniaphoto.com

100 Randolph Road, Somerset, New Jersey 08873 (Phone) 732-271-7369

Email U.S.: sales@sinfoniaphoto.com